

Draft
Supplemental Environmental Assessment
Appendix J: Additional Maps and
Information

Arkansas River Navigation Study
Arkansas and Oklahoma

January 2024

Prepared By:

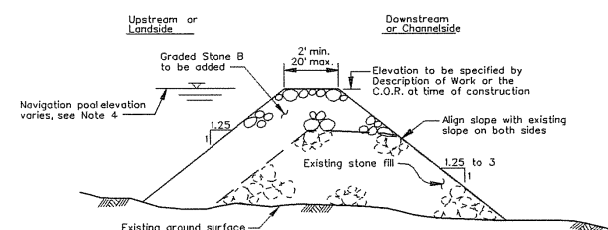
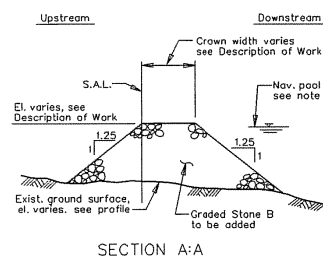
Regional Planning and Environmental Center
Environmental Branch
U.S. Army Corps of Engineers
Little Rock and Tulsa Districts



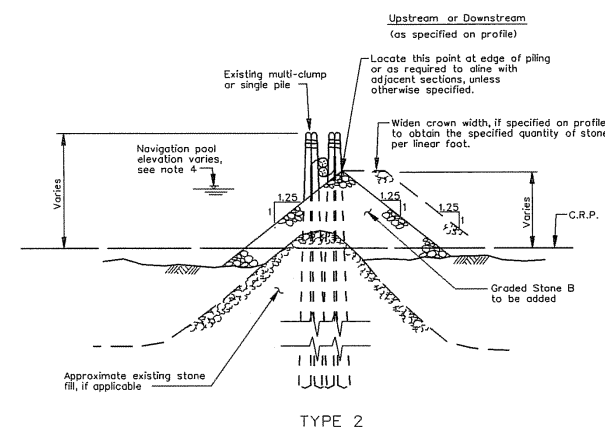
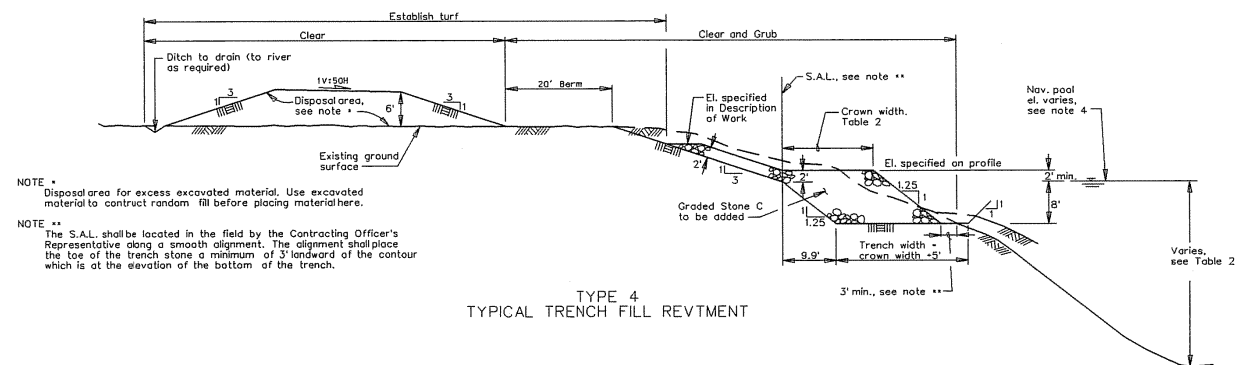
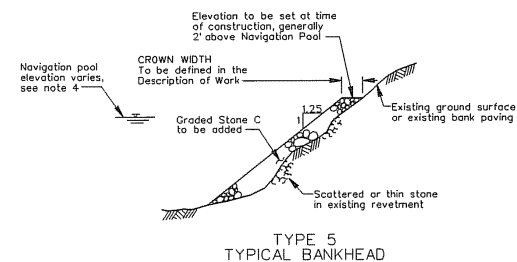
*Use 337.0 water surface for construction
**Use 372.0 water surface for construction

NOTES:

1. The crown widths shown for the typical sections shall be used unless a different crown width is specified by the Description of Work or by the C.O.R.
2. The S.A.L. for Type 4 Trench Fill Revetment will be specified by the Description of Work or by the C.O.R.
3. For single pile revetments and dikes, the S.A.L. is located on the channelward or upstream surface of piles. For multi-clump revetments and dikes, the S.A.L. is located along the center of the channelward or upstream row of clumps.
4. See Table Na.1 for navigation pool elevations.
5. The Description of Work included in the Task Order may change shown dimensions and will define the location of the S.A.L.



TYPE 1
TYPICAL FOR RAISING TOP ELEVATION
OF DIKES



MKARNS Project Area

Terrestrial Habitat Types

Habitat Types

Class

Open Water
Developed Open Space
Developed Low Intensity
Developed Medium Intensity
Developed High Intensity
Barren Land
Deciduous Forest
Evergreen Forest
Mixed Forest
Shrub
Grassland
Pasture
Cultivated Crops
Woody Wetlands
Emergent Herbaceous Wetlands

Data From: National Land Cover
Database 2021

Class	Acres
Open Water	151004.27
Developed Open Space	32455.49
Developed Low Intensity	34832.42
Developed Medium Intensity	22207.30
Developed High Intensity	11231.66
Barren Land	4733.32
Deciduous Forest	135457.90
Evergreen Forest	48964.78
Mixed Forest	28945.10
Shrub	10100.63
Grassland	17573.61
Pasture	192333.93
Cultivated Crops	248625.44
Woody Wetlands	125938.03
Emergent Herbaceous Wetlands	25163.22

0 30 60
Miles


















MKARNS Project Area

Terrestrial Habitat Types

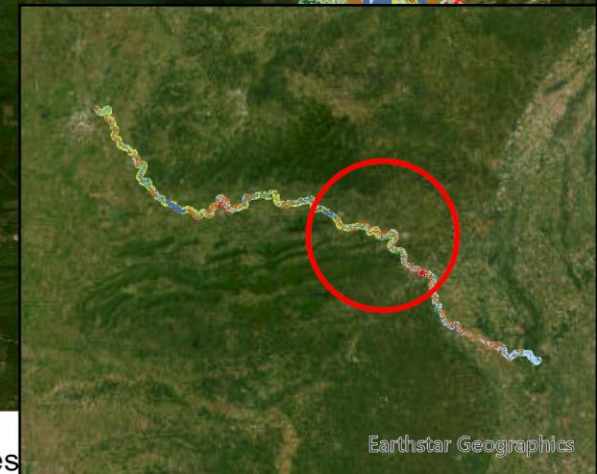
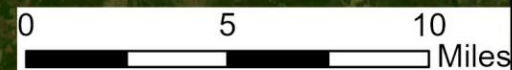
Habitat Types

Class

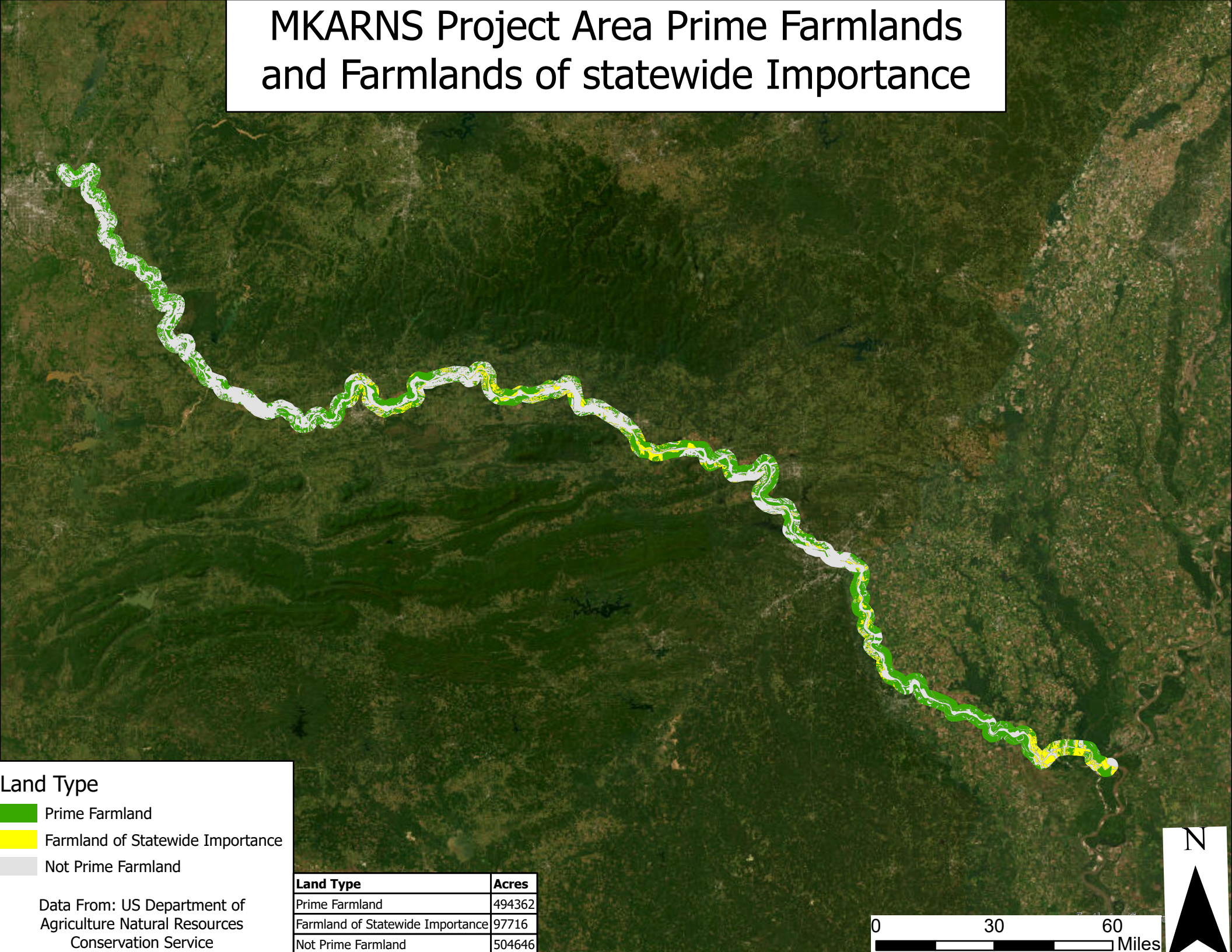
	Open Water
	Developed Open Space
	Developed Low Intensity
	Developed Medium Intensity
	Developed High Intensity
	Barren Land
	Deciduous Forest
	Evergreen Forest
	Mixed Forest
	Shrub
	Grassland
	Pasture
	Cultivated Crops
	Woody Wetlands
	Emergent Herbaceous Wetlands

Data From: National Land Cover
Database 2021

Class	Acres
Open Water	151004.27
Developed Open Space	32455.49
Developed Low Intensity	34832.42
Developed Medium Intensity	22207.30
Developed High Intensity	11231.66
Barren Land	4733.32
Deciduous Forest	135457.90
Evergreen Forest	48964.78
Mixed Forest	28945.10
Shrub	10100.63
Grassland	17573.61
Pasture	192333.93
Cultivated Crops	248625.44
Woody Wetlands	125938.03
Emergent Herbaceous Wetlands	25163.22



MKARNS Project Area Prime Farmlands and Farmlands of statewide Importance

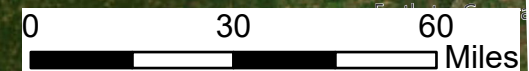


Land Type

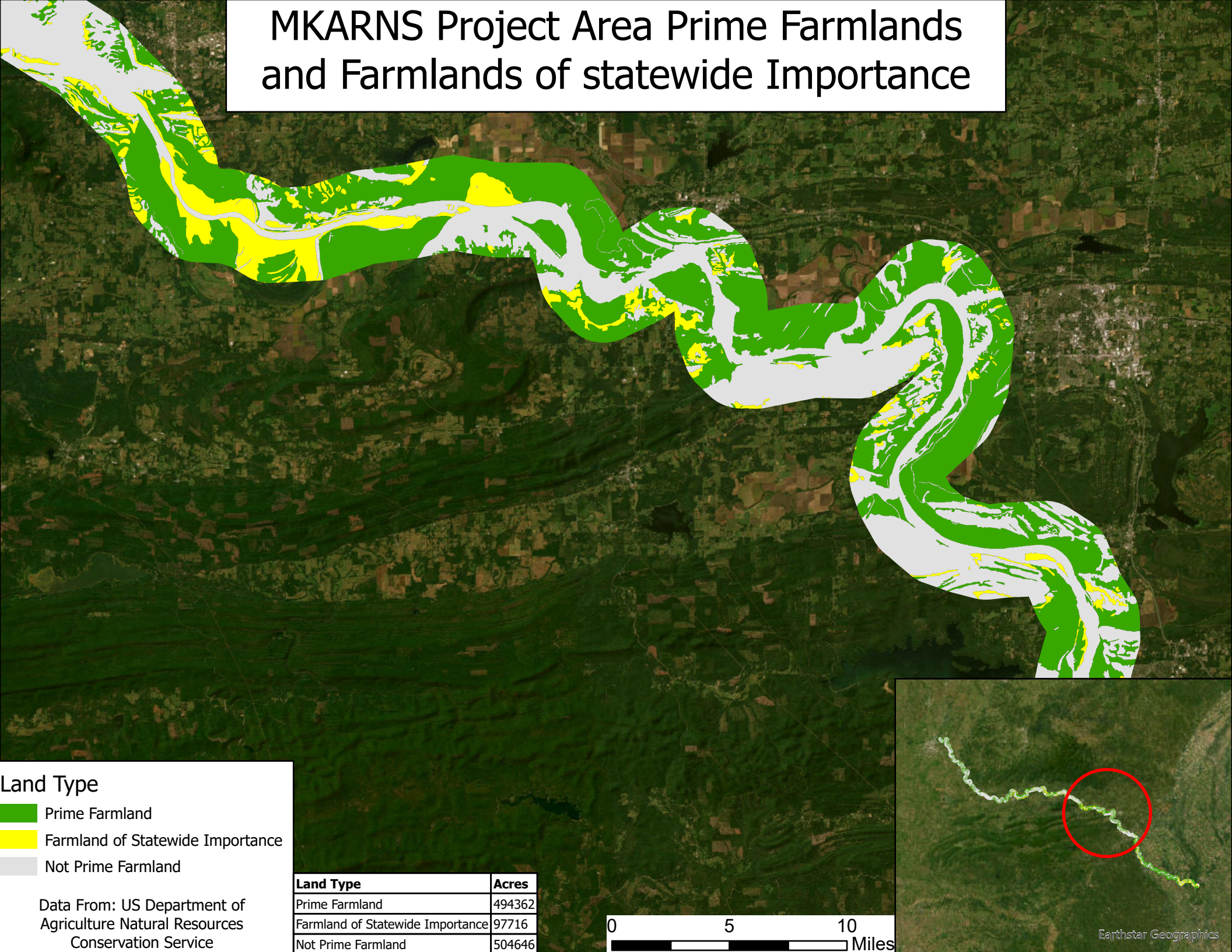
- Prime Farmland
- Farmland of Statewide Importance
- Not Prime Farmland

Data From: US Department of
Agriculture Natural Resources
Conservation Service

Land Type	Acres
Prime Farmland	494362
Farmland of Statewide Importance	97716
Not Prime Farmland	504646



MKARNS Project Area Prime Farmlands and Farmlands of statewide Importance



Land Type

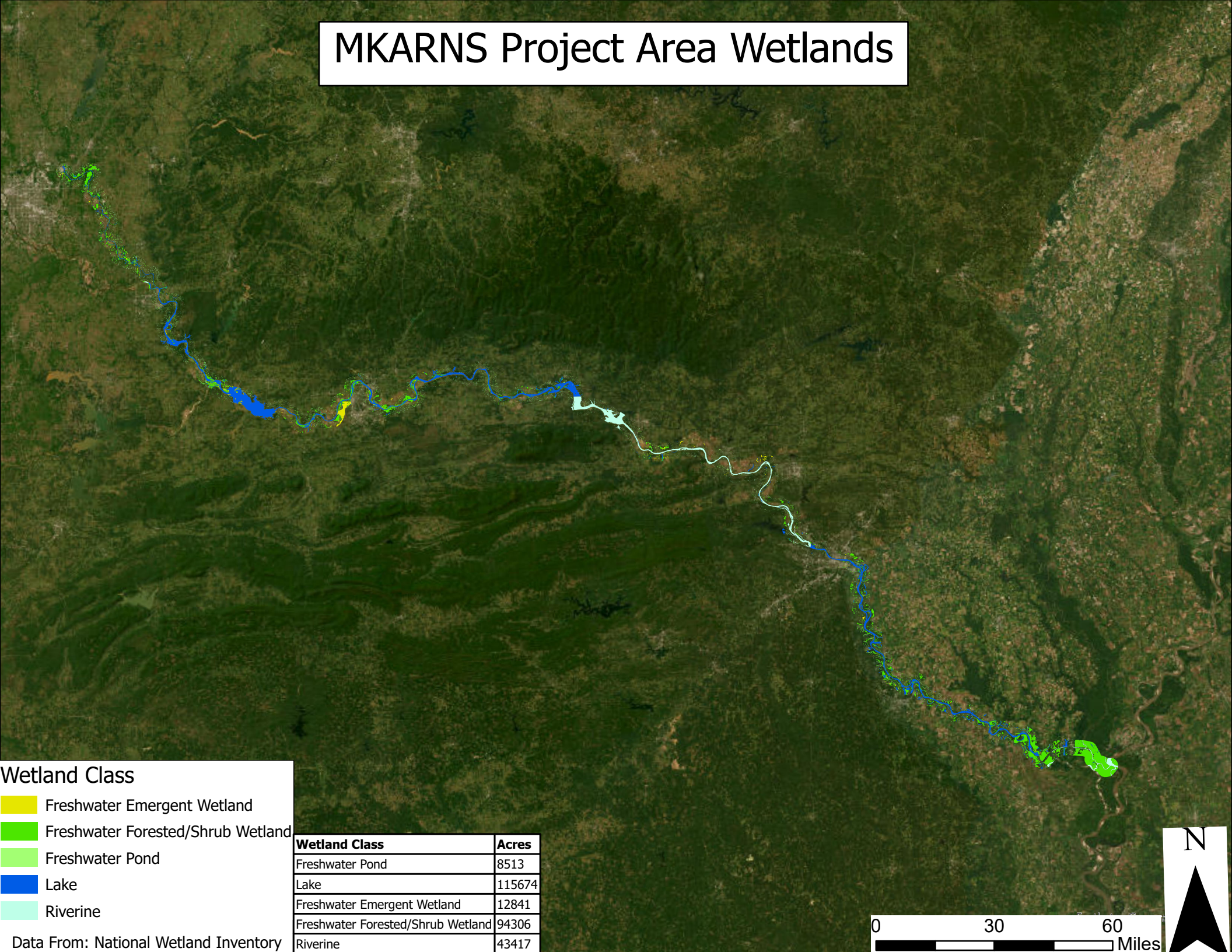
- Prime Farmland
- Farmland of Statewide Importance
- Not Prime Farmland

Data From: US Department of
Agriculture Natural Resources
Conservation Service

Land Type	Acres
Prime Farmland	494362
Farmland of Statewide Importance	97716
Not Prime Farmland	504646

0 5 10
Miles

MKARNS Project Area Wetlands

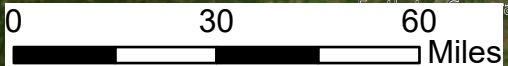


Wetland Class

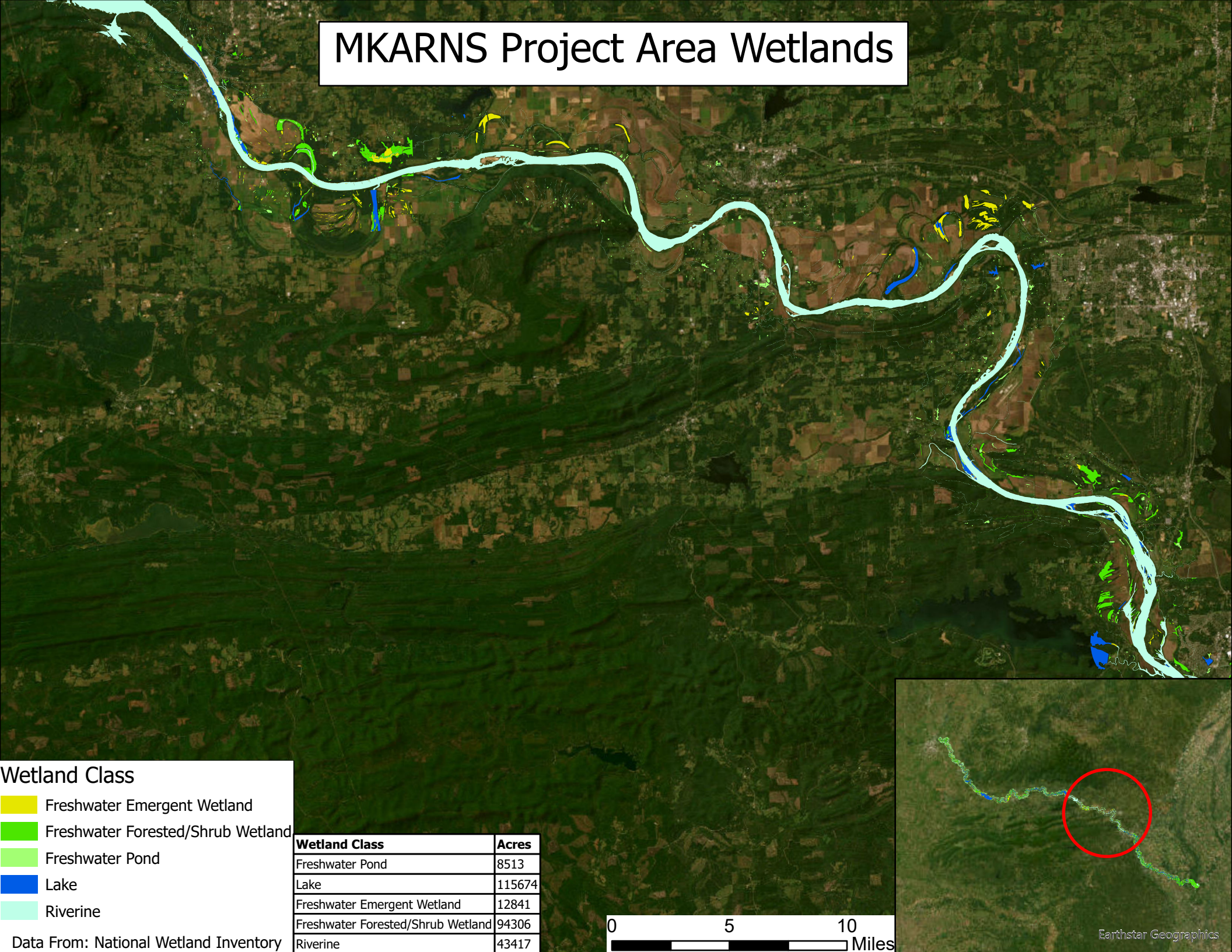
- Freshwater Emergent Wetland
- Freshwater Forested/Shrub Wetland
- Freshwater Pond
- Lake
- Riverine

Wetland Class	Acres
Freshwater Pond	8513
Lake	115674
Freshwater Emergent Wetland	12841
Freshwater Forested/Shrub Wetland	94306
Riverine	43417

Data From: National Wetland Inventory



MKARNS Project Area Wetlands



Wetland Class

- Freshwater Emergent Wetland
- Freshwater Forested/Shrub Wetland
- Freshwater Pond
- Lake
- Riverine

Wetland Class	Acres
Freshwater Pond	8513
Lake	115674
Freshwater Emergent Wetland	12841
Freshwater Forested/Shrub Wetland	94306
Riverine	43417

Data From: National Wetland Inventory

